

The homeowners had visions of old style cabinetry to set off the beauty of their treasured antique furniture—resulting in this beautiful award-winning kitchen design.



## a peaceful welcome home

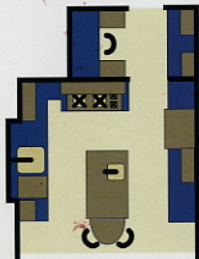
**The antique dining set** was truly a prize: Rich blue in color, the table had a natural pine top, turned legs, matching chairs and a stunning aura of old-fashioned warmth. Its Concord, Massachusetts, owners loved it so much that they decided to create a kitchen in their new home in which the set would look fitting and proper. They chose designer David J. Annand, of Dream Kitchens, Inc., to make their wishes come true.

The homeowners selected a custom, beaded-inset Shaker front cabinet in knotty pine, topped with a judicious mixture of custom Corian, granite and butcher block. Next Annand created a free-standing island, giving it the look of furniture by placing it on big turned legs and bun feet and painting it to match the table. A natural finish butcher-block top on the island completed the look.

A custom Corian countertop flows out into the 6-foot-wide window behind the farmer's sink. To the right of the sink a glass cabinet displays antique implements, while an appli-

ance garage below stows toaster oven and blender. Across the kitchen, a 42" built-in KitchenAid refrigerator hides behind matching pine panels. A pantry with roll-out drawers, a microwave and double wall ovens are conveniently located near the refrigerator.

Just beyond the main kitchen a butler's pantry has ample room for glass display cabinets, additional base cabinets with roll-outs and a large, decoratively functional wine rack. The completed kitchen proves that sometimes "tabling" the issue is the best way to resolve it!



### Special Features

Custom painted cabinets to match antique farmer's table; stand-alone pieces created to look like furniture; 7-foot butler's pantry; multiple countertops in Corian, granite and butcher block.

### Dimensions

14 feet by 13 feet, kitchen.  
9 feet by 7 feet, butler's pantry/desk area.

### Products Used

Cabinetry: Adelphi custom beaded inset knotty pine "shaker" door; Countertops: Dupont Corian Sahara Magna, barre regal gray granite slab, butcher block natural maple; Sinks: Kohler-Alcott; Faucets: Whitehaus vintage; Dishwasher: KitchenAid; Cooktop: JennAir; Oven: Whirlpool; Refrigerator: KitchenAid built-in; Wallcovering: custom decorative tile.

PHOTOGRAPHY: CHARLEY FREERBORG



## DESIGNER

David J. Annand, winner of multiple design awards, is a design professional with Dream Kitchens—member of the SEN Buying Group. Contact David Annand at Dream Kitchens, Inc., 139 Daniel Webster Highway, Nashua, NH 03060; 603/891-2916.

