



Photography: Bill Frick

## an island oasis

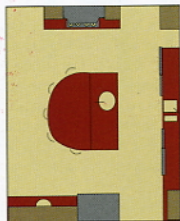
**The very active,** young family puts big demands on their kitchen, the core of their custom-built home. Their fast-paced, people-oriented lifestyle sets the tone for the design. Working side by side, the homeowner and designer Charlotte Nelson of Dream Kitchens incorporated a myriad of highly efficient appliances with elegantly understated maple cabinetry to create a kitchen with multiple work centers.

The large center island is the main focus. The raised half-round seating area accommodates everything from a quick snack to a main meal, and becomes the favorite gathering spot for a crowd. On the opposite side of the island is the main food preparation center, offering a full-size sink and a long uninterrupted work surface.

A bank of windows stretches across the largest of the work centers, creating a bay area that is enhanced by the granite countertop that flows into the recess. This provides ample space around the main

clean-up area, which consists of a large and smaller sink flanked by a dual waste facility and the second dishwasher. Two under-counter ovens also found homes along this wall. And, like bookends, two sets of cabinets complete this space.

The striking look of granite, the continuity of the maple in the flooring, the graceful curves of faucets, and the thoughtful selections of lighting and accessories add to the integrity of this kitchen. ♦

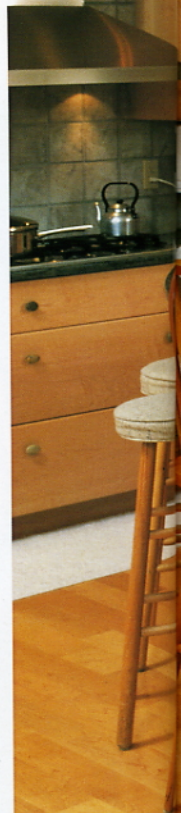


The striking look of granite adds to the integrity.

**Special Features:**  
Half-circle multilevel island; integrated desk area.

**Dimensions:**  
25' X 23'

**Products Used:**  
Cabinetry: Stylecraft  
Countertops: Verde  
Meritaka Granite  
Sink: Franke  
Dishwasher: Regency  
Cooktop: Thermador  
Refrigerator: Sub-Zero  
Oven: Thermador





**DESIGNER**

Charlotte Nelson  
Dream Kitchens  
139 Daniel Webster  
Highway  
Nashua, NH 03060  
Phone: 603.891.2916