

This warm, inviting kitchen features a functional desk area that sports a wood top and backsplash—a distinctive touch that offsets the granite countertops throughout the rest of the room.



An OPEN Concept for *Entertaining*

The young homeowners wanted their New Hampshire kitchen to incorporate a clean, formal, yet inviting look.

They asked designer Paul Hackel to create their new kitchen, complete with an open floor plan that invites frequent entertaining.

Hackel began by furnishing this kitchen for a family of three with warm maple cabinetry, peach granite countertops and an island that commands attention. The dramatic half-octagonal shape of the island allows for a multitude of features, including a snack bar whose location lends itself to casual conversation.

Hackel's island design provides for a traffic pattern that minimizes the steps needed to navigate in this spacious kitchen. To accomplish this, Hackel equipped the island with both the sink and the dishwasher, centralizing the main cleanup area of the kitchen. This same island includes the wine cooler, compactor and mixer, all just steps away from each other. Hackel's arrangement of

these features increases efficiency and ease for the busy homeowner to prepare meals while visiting with family and friends seated in the eating and family areas.

The kitchen's back wall features the refrigerator outfitted in the same maple cabinetry finish found throughout the room. This allows the eye-catching appeal of the large wood hood with its striking rococo molding to gain that much more attention. The hood is perched above the surface burners and the stainless steel backsplash.

Not to be overlooked is the handsome desk area that sports a wood top and backsplash. This offers a distinctive touch that offsets the granite countertops throughout the rest of the room.

Now this warm, inviting kitchen offers the homeowners the efficiency they need and an open setting just right for entertaining. ♦

Special Features

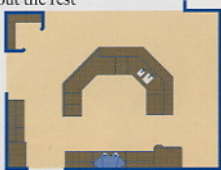
Open, functional concept that lends itself to entertaining; half-octagonal island; designer hood with fine detailing in the rococo molding; golden peach granite countertops; and functional desk area.

Dimensions

13 feet by 19 feet.

Products Used

Custom cabinetry: Quaker Maid; Flooring: Wood-Birch; Granite countertops: Giallo Veneziano; Sink: Franke; Faucets: Kohler; Dishwasher: Miele; Cooktop: Thermador; Refrigerator: Sub-Zero.



Photographer: CHARLEY FRIEDBERG





DESIGNER

Paul L. Hackel is an award-winning certified kitchen designer with 35 years of experience in the kitchen and bath industry. He is also a member of the SEN Buying Group. Contact Paul L. Hackel at Dream Kitchens, 139 Daniel Webster Hwy. S., Nashua, NH 03060; 603/891-2916.